

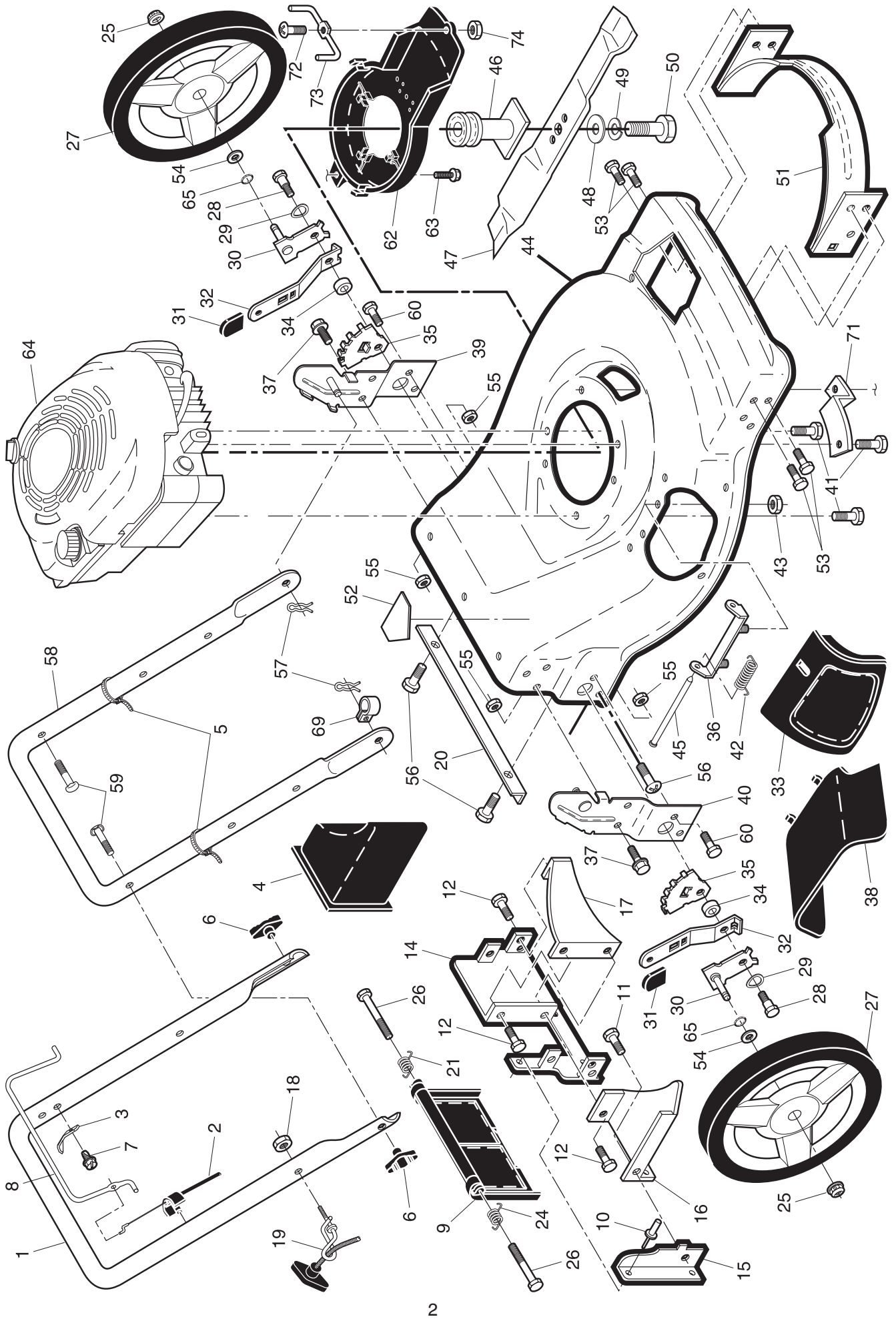
**ILLUSTRATED PARTS LIST**

**MODEL NUMBER PRE6556**

**PRODUCT NUMBER 961 41 00-94**

**MFG. ID. NUMBER 96141009401**

ROTARY LAWN MOWER -- MODEL NUMBER PRE6556 (96141009401) - PRODUCT NUMBER 961 41 00-94



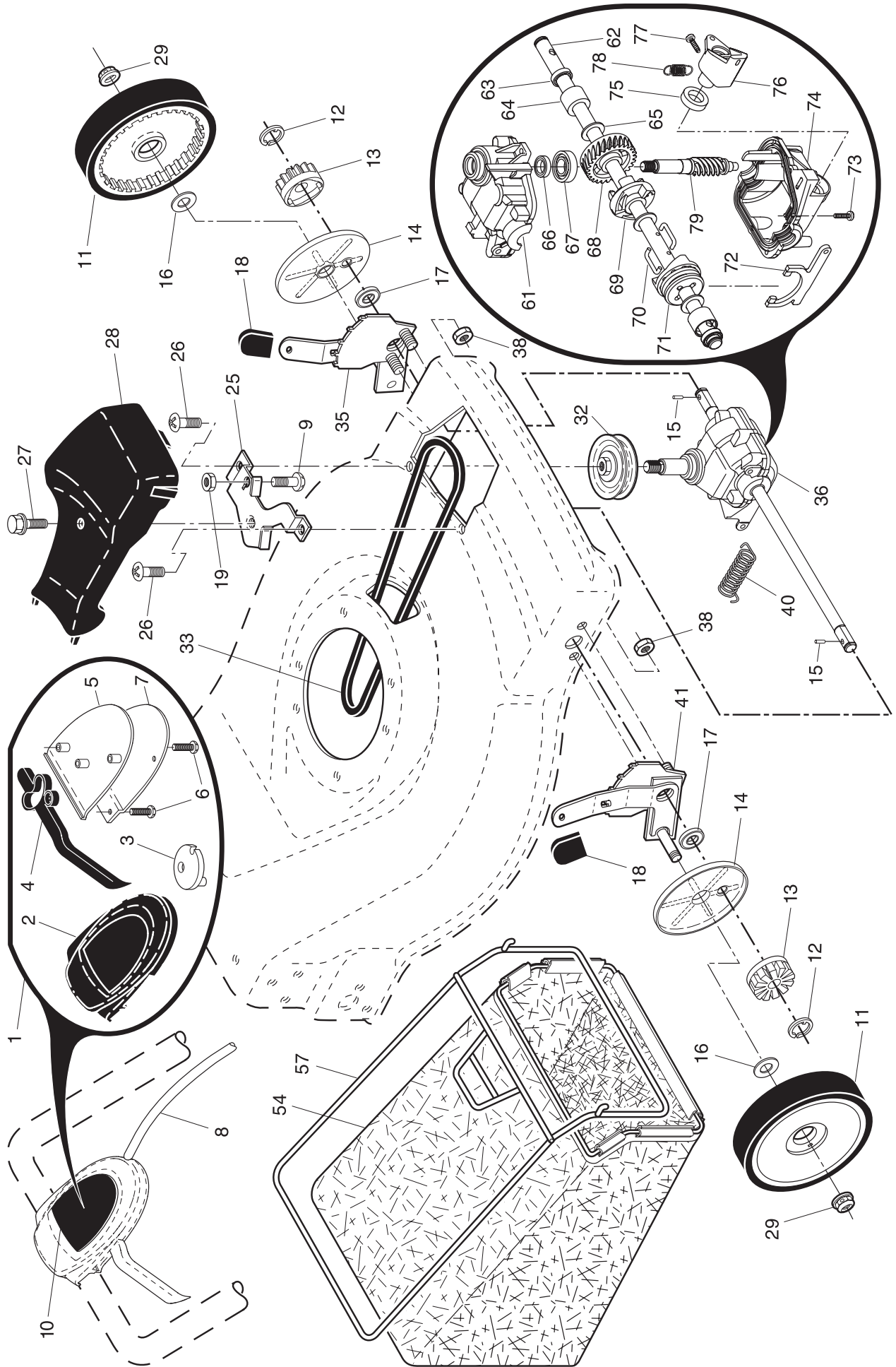
# ROTARY LAWN MOWER - - MODEL NUMBER PRE6556 (96141009401) - PRODUCT NUMBER 961 41 00-94

KEY NO.	PART NO.	DESCRIPTION	KEY NO.	PART NO.	DESCRIPTION
1	532 40 30-71	Upper Handle	41	532 15 04-06	Bolt, Engine
2	532 18 35-67	Engine Zone Control Cable	42	532 19 30-00	Spring, Torsion
3	532 12 51-62	Bracket, Upstop	43	873 80 04-00	Nut, Hex, Nylock
4	532 16 66-49	Mulcher Plug	44	<b>532 40 21-62</b>	Kit, Lawn Mower Housing (Includes Key Numbers 14, 15 and 51)
5	532 06 64-26	Wire Tie	45	532 17 56-50	Rod, Hinge
6	532 19 19-38	Handle Knob	46	532 19 40-37	Blade Adapter / Pulley
7	532 75 06-34	Screw	47	532 19 93-79	Blade, 22"
8	532 40 29-32	Control Bar	48	532 85 10-74	Washer, Hardened
9	532 40 84-92	Rear Door Assembly	49	532 85 02-63	Washer, Helical
10	532 12 84-15	Pop Rivet	50	532 85 10-84	Screw, Machine, Hex Head 3/8
11	532 15 00-50	Screw, Self-Tapping #10-24 x 5/8	51	532 17 04-91	Front Baffle
12	532 05 45-83	Screw, Hex Hex Head, Sems 1/4-20 x 1/2	52	532 18 21-66	Danger Decal
14	<b>532 19 84-65</b>	Back Plate	53	817 60 04-06	Screw
15	532 41 13-34	Side Baffle	54	532 08 83-48	Washer
16	532 17 71-33	Discharge Baffle	55	532 75 15-92	Locknut, Hex 3/8-16
17	532 14 89-41	Rear Baffle	56	532 14 66-94	Screw, Hinge 1/4-20 x 1-1/4
18	532 13 20-04	Keps Locknut 1/4-20	57	532 05 17-93	Hairpin Cotter
19	532 19 47-88	Rope Guide	58	532 15 50-44	Lower Handle
20	532 14 76-25	Foot Guard	59	532 19 15-74	Handle Bolt
21	532 40 54-21	Spring, Rear Door, LH	60	874 76 06-12	Bolt
24	532 40 54-23	Spring, Rear Door, RH	62	<b>532 19 93-14</b>	Debris Shield
25	532 40 91-49	Nut, Hex, Flanged	63	532 19 23-25	Screw, Debris Shield
26	532 18 41-93	Bolt, Rear Door	64	---	Engine, Briggs & Stratton, Model Number 124K02 (Order parts from Engine manufacturer)
27	<b>532 40 30-72</b>	Wheel, Rear			O-Ring
28	532 14 27-48	Bolt, Shoulder 3/8-16 x 1	65	532 19 74-80	Clip, Cable
29	532 40 16-30	Washer, Curved, Cylindrical	69	532 19 79-91	Mounting Bracket, Debris Shield
30	532 40 65-82	Axle Arm Assembly	71	532 19 09-39	Screw, Machine #8
31	532 70 10-37	Selector Knob	72	<b>532 18 22-27</b>	Belt Keeper
32	532 40 98-89	Selector Spring	73	<b>532 19 71-62</b>	Nut, Hex #8
33	532 19 60-53	Mulcher Door	74	<b>532 18 22-28</b>	Warning Decal (not shown)
34	532 40 16-29	Spacer	--	532 18 21-91	Operator's Manual Euro
35	532 41 06-26	Wheel Adjusting Bracket	--	<b>532 41 04-16</b>	Operator's Manual Baltic
36	532 17 57-35	Hinge Bracket Assembly	--	<b>532 41 04-17</b>	Operator's Manual E-Bloc
37	532 15 00-78	Screw, Sems, Thread Cutting 5/16-18 x 3/4	--	<b>532 41 04-18</b>	Operator's Manual Scan
38	532 40 30-73	Discharge Deflector			
39	532 19 71-50	Handle Bracket Assembly, LH			
40	532 19 71-51	Handle Bracket Assembly, RH			

**NOTE:** All component dimensions given in U.S. inches. 1 inch = 25.4 mm

**IMPORTANT:** Use only Original Equipment Manufacturer (O.E.M.) replacement parts. Failure to do so could be hazardous, damage your lawn mower and void your warranty.

ROTARY LAWN MOWER -- MODEL NUMBER PRE6556 (96141009401) - PRODUCT NUMBER 961 41 00-94



**ROTARY LAWN MOWER - - MODEL NUMBER PRE6556 (96141009401) - PRODUCT NUMBER 961 41 00-94**

KEY NO.	PART NO.	DESCRIPTION	KEY NO.	PART NO.	DESCRIPTION
1	<b>532 19 71-93</b>	Drive Control Assembly (Includes Cable)	36	<b>532 19 16-36</b>	(Includes Knob and Bearing)
2	532 41 16-73	Cover, Drive Control, Top	38	873 80 04-00	Gear Case Assembly, Complete
3	<b>532 18 73-53</b>	Pulley	40	<b>532 19 28-49</b>	Locknut, Hex 1/4-20
4	<b>532 18 82-81</b>	Lever, Drive Control	41	532 40 88-61	Spring
5	532 41 16-64	Cover, Drive Control, Bottom			Kit, Wheel Adjuster, RH
6	532 18 16-98	Screw, Torx Head #8 x 5/8	54	<b>532 41 06-87</b>	(Includes Knob and Bearing)
7	532 40 07-23	Mounting Bracket, Drive Control	57	532 40 74-54	Grassbag Assembly
8	<b>532 19 71-95</b>	Cable, Drive Control	61	<b>532 19 68-86</b>	Frame, Grassbag
9	<b>532 08 86-52</b>	Screw	62	<b>532 19 70-57</b>	Case, Upper
10	<b>532 41 01-19</b>	Decal, Drive Control	63	532 18 35-08	Shaft, Output
11	<b>532 40 25-67</b>	Wheel & Tire Assembly	64	532 18 35-11	Seal, Output Shaft
12	812 00 00-58	E-Ring	65	532 18 35-09	Bushing
13	532 40 38-49	Gear, Pinion	66	532 18 35-14	Washer
14	532 18 94-03	Dust Cover	67	532 18 35-06	Seal, Worm Shaft
15	532 19 10-17	Drive Pawl	68	<b>532 18 34-99</b>	Bearing, Ball
16	532 06 77-25	Washer, Flat 3/8	69	<b>532 19 68-84</b>	Gear, 27 Teeth
17	532 19 10-39	Bearing, Wheel Adjuster	70	<b>532 18 35-05</b>	Fixed Dog Clutch
18	532 70 10-37	Selector Knob	71	<b>532 19 68-83</b>	Wireform
19	<b>532 19 17-30</b>	Nut	72	<b>532 19 68-82</b>	Movable Dog Clutch
25	532 19 73-86	Belt Keeper	73	532 18 35-13	Fork
26	532 19 23-25	Screw, Hi-Lo Thread #12 x 5/8	74	<b>532 19 68-81</b>	Screw, Case
27	532 17 52-62	Pan Head Tapping Screw #10-24 x 2-3/4	75	<b>532 19 68-80</b>	Case, Lower
28	532 19 60-56	Drive Cover	76	<b>532 19 68-79</b>	Seal, Lever
29	532 40 91-48	Locknut, Hex	77	<b>532 19 68-78</b>	Lever
32	532 19 40-18	Drive Pulley	78	<b>532 19 68-77</b>	Screw, Lever
33	532 19 68-57	V-Belt	79	<b>532 18 35-02</b>	Spring
35	532 40 88-62	Kit, Wheel Adjuster, LH			Shaft, Worm

**NOTE:** All component dimensions given in U.S. inches. 1 inch = 25.4 mm

**IMPORTANT:** Use only Original Equipment Manufacturer (O.E.M.) replacement parts. Failure to do so could be hazardous, damage your lawn mower and void your warranty.